

Canal & River Trust

Living waterways that transform places
and enrich lives

Rebecca Mason

Enterprise Manager – North West

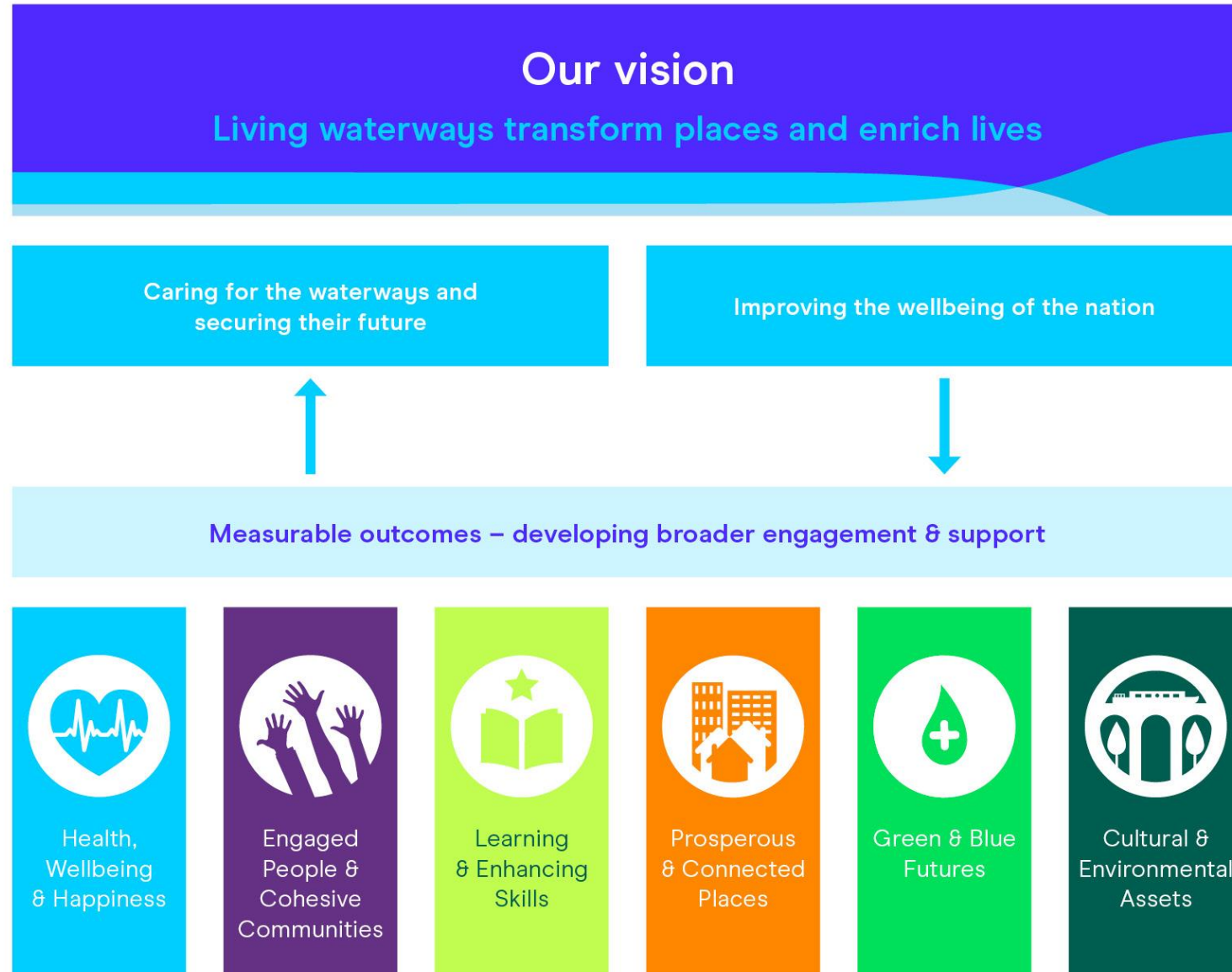


**Canal &
River Trust**

Making life better by water

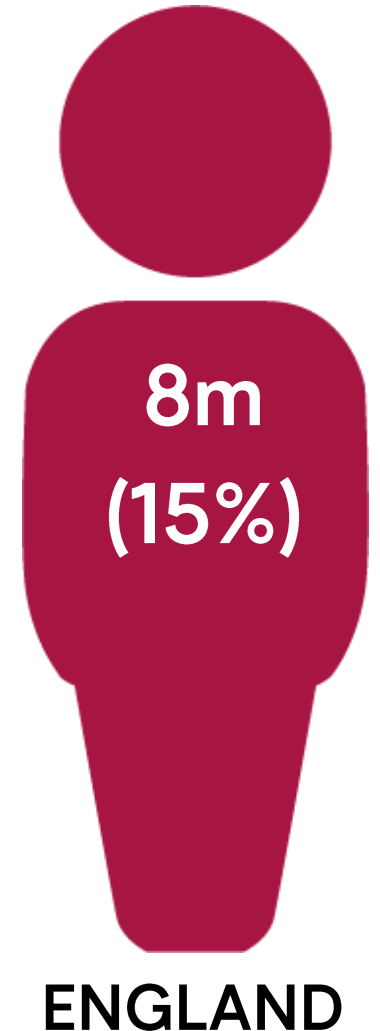
Our Purpose

Waterways *and* Wellbeing Trust

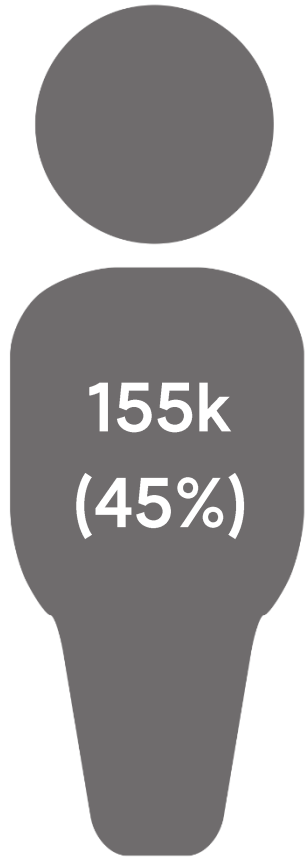


Our Potential Reach

8+ million people live within
10 – 15mins (or c.1km) walk of
our waterways



Our Potential Reach



Cheshire West
and Chester

Approximately 155k people live within
10 – 15 mins (or c.1km) walk of our
waterways in Cheshire West and
Chester

Making life better by water



Making life better by water

Canals in rural locations



..... Canals in urban locations



And not forgetting our rivers

Making life better by water

Reservoirs



Aqueducts

Making life better by water

Locks – Big & Small



Making life better by water

Bridges



Tunnels



Making life better by water



A bizarre mix of listed structures!



Making life better by water



Volunteering



Making life better by water



Corporate Engagement



Adoption schemes

Making life better by water



Work with young people – the
waterway users of the future

Making life better by water



Anderton Boat Lift:
The Cathedral of the
Canals

Making life better by water

National Waterways Museum:

- 225 year old dock area
- 18 listed buildings & features
- Historic vessels
- A diverse small-object collection
- Home to the Waterways Archive



Making life better by water



From this



To this

Making life better by water

Active Waterways



Making life better by water

- We need to work in partnership to unlock the potential of Cheshire's waterways – who should we be working with?
- What would local people and businesses like to see out of our waterways?
- What are the barriers?
- What are the solutions?

**Rebecca Mason
Enterprise Manager**

Rebecca.mason@canalrivertrust.org.uk

07917 456863



**Canal &
River Trust**

Making life better by water