



CHESTER CYCLING CAMPAIGN

Working to Create a Cycle Friendly City.....

CYCLING MATTERS!

THE QUARTERLY NEWSLETTER OF CHESTER CYCLING CAMPAIGN



WINTER 2024

Sign up for Free Cycling Training!

Page 3 Click [here](#)



Campaign Members Clean Up Cycle Path

Page 4 Click [here](#)



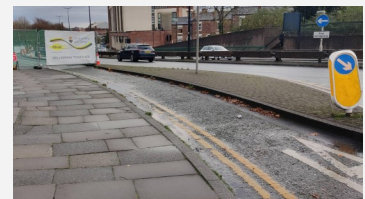
At Last! Riverside Path Barriers to be Removed

Page 5 Click [here](#)



More Cycling Infrastructure News

Page 6 Click [here](#)



Campaigning at Community Events

Page 7 Click [here](#)



Yes, Do tell them!

Page 8 Click [here](#)



Chester Cycle Buddies Scheme

Page 9 Click [here](#)



Volunteers Needed to help with Running the Campaign!

Page 10 Click [here](#)



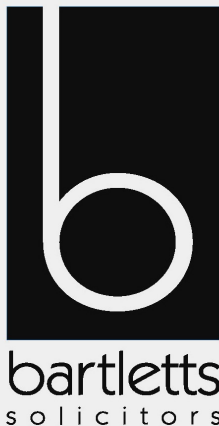
Chester Cycling Campaign is grateful to
Bartlett's Solicitors for supporting the production of
Cycling Matters!

BARTLETTS SOLICITORS

Your local legal experts

be listened to...be supported...be with bartletts

Proud to support Chester Cycling Campaign



- Personal injury
- Buying or selling your home
- Commercial property
- Court of protection
- Landlord & tenant
- Wills, trusts & estates

Tel: **01244 405399** • Freephone 0800 157 7923

Text **Bartletts** to **60006**

Email: **chester@bartletts.co.uk** • **www.bartletts.co.uk**

16 Nicholas Street, **Chester**, CH1 2NX

Martins Bank Chambers, 31 Hoole Road, **Chester**, CH2 3NF

5 Charles Street, **Wrexham**, LL13 8BT



\BartlettsChesterWrexham



@bebartletts

Sign up for Free Cycling Training!

Getting some cycling training is great for increasing your knowledge and confidence about riding on the road. An adult who did the Bikeability Level 3 course said “It was really good, it taught me how to position myself in the road and at junctions and increased my confidence enormously. I use those skills every day now.”

Our Council, Cheshire West and Chester, are currently offering 3 types of cycling training. They are all free, so sign up now!

- Cycling training for adults who are CW&C residents.
- Cycling training for families who are CW&C residents.
- Cycling training for employees of businesses based in CW&C (this offer runs until March 2025).



Training is provided by the specialist cycle training organisation BikeRight, who teach the nationally recognised cycle training programme Bikeability.

Participants need to bring their own bikes.

To sign up, or for more details on the levels and courses available, visit:

<https://www.bikeright.co.uk/cheshirewest-chester>

This QR code takes you there.



Employers need to contact BikeRight and organise dates with them, using the contact form on the BikeRight website or by emailing merseysideoffice@bikeright.co.uk



Campaign Members Clean Up Cycle Path

Many thanks to Campaign members Linda, Stewart, Monica and Kevin who cleared the cycle path between Wrexham Road and the Duke's Drive on Saturday 26th October.

This well-used path is an important link between Westminster Park and Handbridge, and a key route for the Handbridge schools.

It is a segregated cycle and pedestrian path with woodland on both sides which makes it very pleasant, but does mean that leaves build up on the path during autumn.

It's a lot clearer now for all users, pedestrians and cyclists alike. Well done for all your hard work Linda, Stewart, Monica and Kevin!



Before



After



At Last! Riverside Path Barriers to be Removed

After a long period of hard work over several years by various groups including the Campaign's Accessibility Officer, Eileen Morgan, Flintshire County Council has agreed to remove the A-Frame barriers which, for years, have been obstacles to accessibility on the Wales Coast Path along the River Dee into Wales.



One of the old A-frame barriers

Originally installed with the aim of preventing motorcycle access, the barriers also prevented many legitimate users from using the path.

The list of things which couldn't get through or had to be manoeuvred awkwardly or lifted over by willing passers-by included: lots of different types of cycles such as trikes, recumbents and even Dutch-style bikes, any non-standard cycle used as a mobility aid, mobility scooters, ordinary wheelchairs, prams, etc etc.

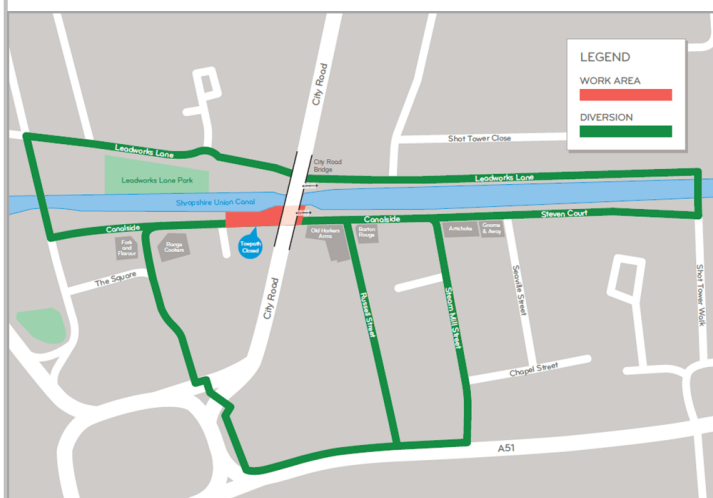
The barriers effectively discriminated against anyone using anything other than a sleek two-wheeled bike with narrow handlebars.

Work has started already, the A-frames at Saltney Ferry have gone already and work will continue, moving on to the Connah's Quay area.

Congratulations to Eileen and all the people involved in getting the barriers removed. We are delighted that everyone will at last have equal access to this lovely path.



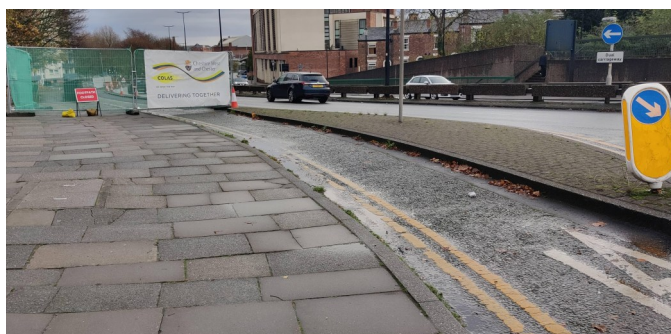
Updates about Cycling Infrastructure in Chester Canalside, The Old Harkers Arms



Good news! The canal towpath beside the Old Harkers Arms is now open again. It had been completely closed for a couple of months, due to a collapsed sewer pipe. Welsh Water has now completed the repairs, and pedestrians and cyclists have regained this very handy, and attractive, route.

St Anne Street/St Oswalds Way junction

Work has recently started on the improvement works on the St Anne Street/St Oswalds Way junction, part of the Pink cycle route which goes from the city centre to Upton.



Campaign members

contributed suggestions during the planning of the scheme, which involves widening the cycle track from Victoria Road down to St Anne Street and creating separate crossings for pedestrians and cyclists. Work paused over Christmas, then will resume and continue until the end of April 2025.

Lower Bridge Street / Pepper Street junction

The Campaign asked the Council why the old Advanced Stop Lines for cyclists have been omitted when the traffic lanes were re-painted after work was done on the junction. The Council says that they followed Government advice to remove the ASLs because there is insufficient road width to provide feeder lanes.



Campaigning at Community Events

Volunteers from the Campaign enjoy engaging with the public at local fetes and community events. We find that a lot of people aren't aware of cycle routes in Chester and are surprised when we tell them that it is often faster to get around Chester by bike than by car!

Our large map of the cycle routes in Chester is always popular, as is our Chester Cycle Buddy Scheme and benefits of membership like a free bike check, discounts from local retailers and free loan of our bike workstand and tools.



Here are Campaign members Arnold and Monica at the Upton Pavilion Fun Day on 14th September, with Councillor Sue Stanley, Chair of Upton-by-Chester Parish Council, Councillor Razia Daniels, Lord Mayor of Chester and Councillor Sherin Akhtar, Upton Ward Councillor for Cheshire West and Chester.



Yes, do tell them!

A Campaign member reported success recently in approaching two companies whose drivers had driven to lower standards than the companies would have expected. Both companies responded very well, identified and spoke to the drivers concerned and reported back, emphasising that the driver's actions had not upheld the standard the company expected.

In the first case, the cyclist was overtaken by a bus whose driver indicated that the cyclists should move over, closer to parked cars. The cyclist was correctly - and wisely - keeping out of the "door zone", where an opened car door could have knocked them off their bike. The company reviewed the CCTV in the bus and addressed the problematic behaviour of the driver.



The door zone. Always ride outside it!

In the second case, a large construction vehicle was being driven far too fast on a 20mph road, posing a danger to the cyclist and any other road (or pavement!) user. Again, the company responded well, taking up the issue with the agency which employed the driver on the company's behalf.

Many professional drivers take great care around cyclists and no company wants its reputation tarnished. So the message is yes, do tell companies. If you don't, they won't know!

We are happy to help any local companies who wish to give their drivers a perspective on what it's like to cycle on the road, either through just a talk, or experience out on the road where we would accompany the drivers. Use the Contact Us page on our website <https://chestercyclecity.org/contact-us/>



Chester Cycle Buddies Scheme



Cycle Buddies Joyce (left) and Cathey

Joyce used the Chester Cycle Buddies scheme to find out how to get into the city centre from her home in the outskirts, and where to park her bike once in the city centre.

Joyce said “I realised I was using my car for really short journeys. I’ve always had a bike, always used my bike, but I found it just really difficult to get in and around Chester. I didn’t know which direction I could go, where I could park my bike, and I wanted to know how to get there safely, and that’s where Chester Cycle Buddies came in.”

Joyce was buddied up with Cathey, a Cycling Campaign Buddy who helps people with whatever they need to cycle in Chester.

Now Joyce has the confidence to ride into the city centre and knows where to park her bike securely.

You may be unsure about riding on your own, riding in traffic, or where to park your bike. Or maybe you’re back on a bike after some time and need a bit of practice. Or maybe you want to know what’s changed since you last rode - or perhaps you just need a bit of a confidence boost. We can help you to plan cycle-friendly routes to places you would like to go, ride with you to test out routes and answer any queries you may have. And you don’t have to be a Campaign member to use Chester Cycle Buddies.

People are often surprised to learn how easy it can be to get around Chester by cycle (work, children’s schools, shops, city centre, leisure, friends, etc).

The information is on our website [here](#).



Join the Campaign and Get a Free Bike Safety Check

Do you have a bike which you haven’t ridden for a while? Would you like to start using it around Chester? Maybe you’re not sure whether it’s roadworthy and would like it checked out?

One of the benefits of joining Chester Cycling Campaign is that you can have a free bike safety check, including puncture repairs, brake adjustments, and derailleur gear adjustments.

And Bren Bikes, a Corporate member of the Campaign, is offering a Cycle Health Check completely free of charge! Normal price is £25. Details of both are on our [membership page](#).

Join us, get your free bike check and you’ll be all set for cycling! You can join online, using the link above to our membership page. Or print off and post the form on [page 11](#).



Volunteers Needed to Help with Running the Campaign!



The Campaign has a few vacancies for "role holders". Some are currently filled by people who would like someone to shadow them for a while, with a view to taking over the role. We are on the lookout for support in the following areas:

- **Treasurer** - to manage and maintain the Campaign's accounts and online bank account and arranging payments as approved by Campaign meetings.
- **Liaison with Cheshire West and Chester Council Officers** - to develop and maintain contact with key Senior Officers and Councillors within the Council and to engage with them to help support the Campaign's work to improve cycling infrastructure in Chester.
- **Membership Secretary** - to welcome new members as they join the Campaign and to promote new membership of both individuals and local businesses in Chester and nearby.
- **Publicity** - to help promote the Campaign and its activities through various channels, such as online, local media and at events that the Campaign may attend.
- **Events** - To coordinate and encourage volunteers from the Campaign to help maintain a presence at various public events in Chester and nearby.

Come and join our friendly team! If you feel you might be able to offer some time or expertise in any of these areas, or would like an exploratory chat, please contact the Campaign via email: enquiries@chestercyclecity.org or via the Contact Us page on our website:

<https://chestercyclecity.org/contact-us/>



Join the Chester Cycling Campaign!

Name	
Address	
Post Code	
Phone	
Email	

If you are happy to receive your Campaign bulletins by e-mail and to be notified of Campaign activities by email, please tick here: ☐

- | | |
|--|----------------|
| <input type="checkbox"/> Individual Membership | £10.00 |
| <input type="checkbox"/> Unwaged\Student | £5.00 |
| <input type="checkbox"/> Family Membership | £15.00 |
| <input type="checkbox"/> Corporate Membership | £25.00 |
| <input type="checkbox"/> Life Membership | £100.00 |

Membership is valid until end of September during year of joining. Join after April 1st and it will be valid until the end of September in the following year!

How did you hear about the Chester Cycling Campaign?

- | | |
|---|---|
| <input type="checkbox"/> Chester Cycling Campaign website | <input type="checkbox"/> Local Event |
| <input type="checkbox"/> Friend | <input type="checkbox"/> Local Press |
| <input type="checkbox"/> Cycling Matters Newsletter | <input type="checkbox"/> Social Network |
| <input type="checkbox"/> Other – state: | |

I enclose an additional donation of £ _____

I agree to this information being placed on an electronic database for Campaign purposes only.

Signed _____ Date _____

Please send completed form & cheque (payable to Chester Cycling Campaign) to:

Chester Cycling Campaign Membership Secretary
1 King's Crescent West
Chester
CH3 5TQ