



CHESTER CYCLING CAMPAIGN

Working to Create a Cycle Friendly City.....

CYCLING MATTERS!

THE QUARTERLY NEWSLETTER OF CHESTER CYCLING CAMPAIGN



SUMMER 2025

Campaign at Chester Green Weekend 2025

Page 3 Click [here](#)



Campaign Working to Keep Charterhall Dr. Route to Station

Page 4 Click [here](#)



Fountains Roundabout Trial - Feedback Requested

Page 5 Click [here](#)



Bike-it Breakfast At Guilden Sutton Primary School

Page 6 Click [here](#)



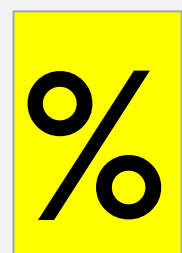
Even More Cycle Path Clean-ups!

Page 7 Click [here](#)



Bike Shop Discounts for Members!

Page 8 Click [here](#)



More Snickets of Chester

Page 9 Click [here](#)



Get a Cycle Buddy!

Page 10 Click [here](#)



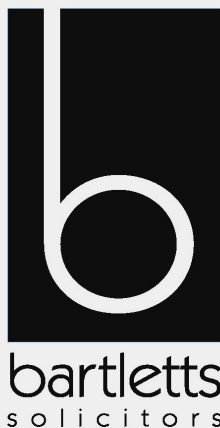
Chester Cycling Campaign is grateful to
Bartlett's Solicitors for supporting the production of
Cycling Matters!

BARTLETTS SOLICITORS

Your local legal experts

be listened to...be supported...be with bartletts

Proud to support Chester Cycling Campaign



- Personal injury
- Buying or selling your home
- Commercial property
- Court of protection
- Landlord & tenant
- Wills, trusts & estates

Tel: **01244 405399** • Freephone 0800 157 7923

Text **Bartletts** to **60006**

Email: **chester@bartletts.co.uk** • **www.bartletts.co.uk**

16 Nicholas Street, **Chester**, CH1 2NX

Martins Bank Chambers, 31 Hoole Road, **Chester**, CH2 3NF

5 Charles Street, **Wrexham**, LL13 8BT



BartlettsChesterWrexham



@bebartletts

Campaign at Chester Green Weekend 2025



Chester Cycling Campaign's members were out promoting cycling at Chester's Green Weekend on Saturday 7th and Sunday 8th June. Questions were answered, tips were passed on and encouragement given. Cycle routes were popular, as usual.

Members staffed several stands in the town hall square, including the Campaign's information stand, 20's Plenty for Chester, Bren Bikes and the very popular Smoothie Making Bike from Sustrans. The Bike Factory provided bike try-outs and Dr Bike on Dean's Field.

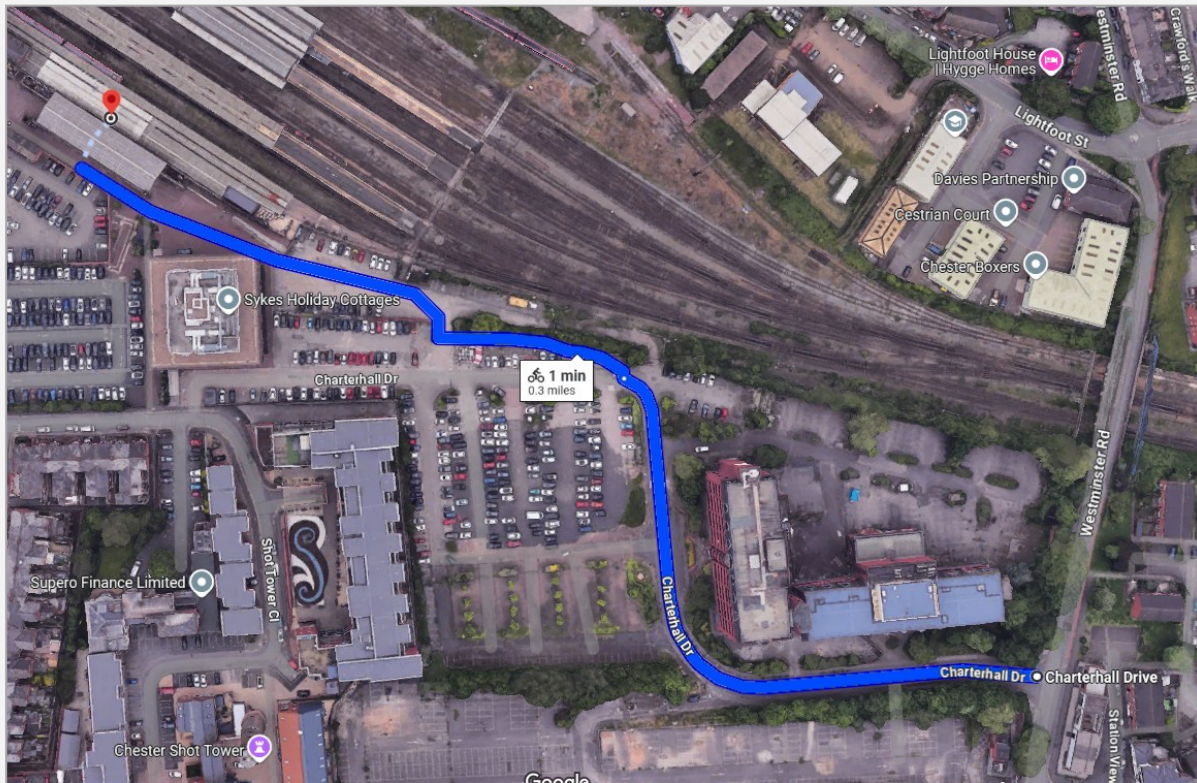
In the weeks leading up to the Green Weekend, Campaign members visited 14 local schools to advertise it and to highlight the benefits of cycling, wheeling and walking to school.



Many of the schools took part in a competition to decorate bike wheels. The results, which were very imaginative, made a superb display.



Campaign Working to Keep Charterhall Drive Route to Station



There is a very useful route to the railway station through Charterhall Drive (the old Lloyds Bank site off Westminster Road) for people walking or cycling between the station and the eastern side of Chester. It avoids the long way round (via City Road).

Whilst the route is over private land, local people have used it for many years. The land is currently being redeveloped and the Campaign is keen to see the route retained.

A very positive meeting took place on 8th May, on site, between Chester Cycling Campaign and local Councillors and Council officers to point out how valuable this route is, and also to propose an access route from Westminster Road to the Station via the canal towpath. Our proposal was well received and we hope it will be able to be implemented.

If you would also like the Charterhall Drive route to stay open, please tell the Councillors for the area, which is Chester City and The Garden Quarter ward. You can email them. Find them on the Cheshire West and Chester website, under [Councillors and Committees](#).



Fountains Roundabout Trial Scheme - Feedback Requested

Please have your say! How are you finding using the Fountains Roundabout as a cyclist?

Cheshire West and Chester Council is using Active Travel funding to trial various options to improve traffic flow, pedestrian safety and accessibility for all users of the roundabout, be they motorists, pedestrians or cyclists.



The Council's [Local Cycling and Walking Infrastructure Plan](#) identifies the junction as a key gateway to the city from the north, used by many residents and students who live locally.

Council leader Louise Gittins said: "The traffic signals at Fountains Roundabout are approaching the end of their operational lifespan. Our Highways service has been looking into potential future options for the management of traffic and to support cyclists and pedestrians at the junction to find the best solution for all road users."

Phase 1, which was from 12th - 26th May, turned off the traffic lights, so that it functioned just like a normal, non-traffic-light controlled, roundabout.

Phase 2 started on 27th May. Traffic lights on the roundabout are still off, and temporary pedestrian crossings across St Oswald's Way have been installed. The subways are being left unchanged.

The trial will continue until 7th July, when the temporary pedestrian facilities will be removed and the permanent traffic signals will be switched back on.

The Council has asked for feedback. Chester Cycling Campaign will put together a group response. Please email the Campaign by the end of June via our [webpage](#). Thank you.

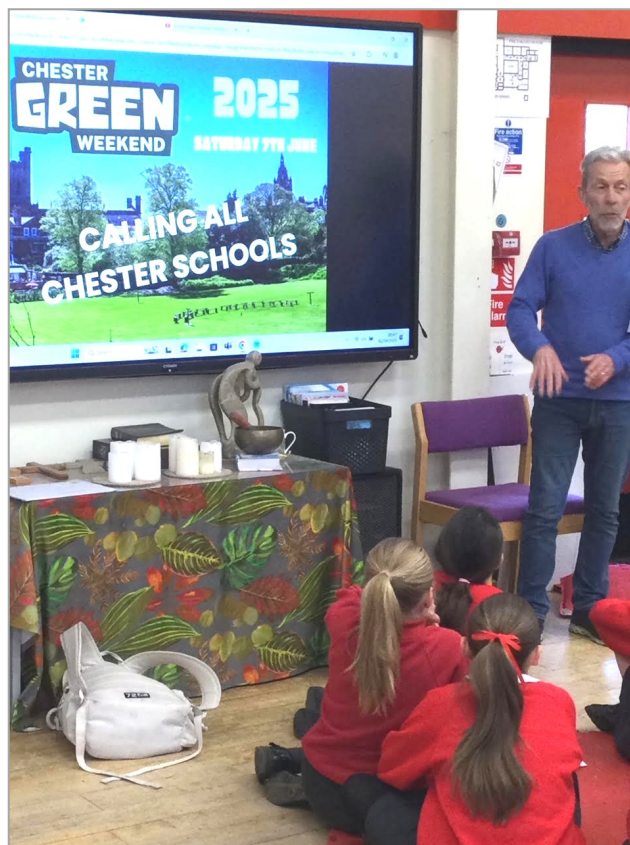


Bike-it Breakfast at Guilden Sutton Primary School

On 2nd April the whole of Guilden Sutton Primary school was encouraged to cycle or walk into school for a “Bike-it Breakfast”, supported by the Campaign.

On arrival at school children’s bikes were given a brief check by Campaign members. Minor adjustments were made where needed and bikes were then given a green, orange or red coding to indicate the need for further attention.

Children were invited to a free, healthy breakfast and parents were encouraged to meet members of



the Campaign. Stephen Perry shared a presentation and video about the forthcoming Chester Green Weekend, which the children viewed with enthusiasm.

After breakfast two school assembly groups enjoyed a 10-minute discussion led by Chester Cycling Campaign about the benefits of cycling and tips on good cycling.

The school cycle racks were full of bikes and scooters, showing that children love to get to school under their own power!



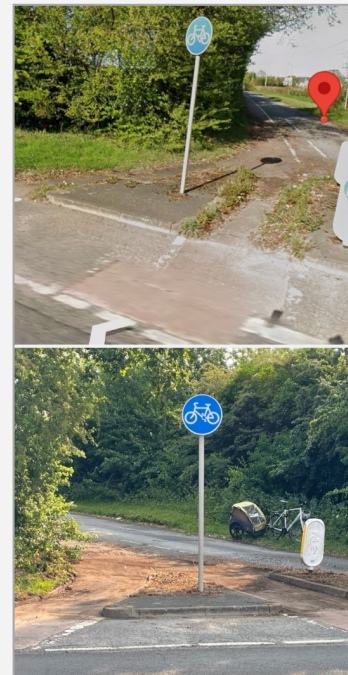
Even More Cycle Path Clean-ups!

Chester Cycling Campaign members would love to see all of Chester's cycle paths cleared of encroaching vegetation, paths swept and cycle route signs cleaned on a regular basis, as is done in countries with superb cycling infrastructure like the Netherlands. In the absence of that in Britain, Chester Cycling Campaign members occasionally pick up some tools and clean up cycle paths simply because they think they, and everyone else, should benefit from unobstructed cycle routes.

Recent examples are:

- The cycle lane on Green Lane, just off the A41, going towards Piper's Ash: a member cut back vegetation and swept the path.
- The cycle lane alongside the Deva Link Road (A5480 Parkgate Roundabout to the Greenway): a member cut back vegetation, cleaned road signs and cleaned the cycle route signs.
- The Greenway/Deva Link sloping path and the Greenway/Canal Towpath link were both cleared by two Campaign members assisted by a Sustrans volunteer. They cut back overhanging vegetation, scraped both paths back to their edges, and did a litter pick while they were at it!
- The "Hamburger" roundabout in Boughton: a member cut back spiky vegetation on the path at the exit from the pedestrian and cycle crossing, used daily by Christleton High School pupils.

Many thanks to all the Campaign members who did this work, voluntarily, to benefit the community.



Before (top) and After (bottom) photos from left to right:
Deva Link Road, Deva Link Road and Green Lane next to A41, leading to Piper's Ash.



Bike Shop Discounts!

Many thanks to Leisure Lakes Bikes, Frodsham, for joining the bike shops which offer discounts to Chester Cycling Campaign members.

Being a Campaign member is great value: at only £10 per year for individual annual membership (or £5 for students/unwaged, or £15 for a family). Your membership fees can easily be recouped by buying from your local bike shop - wins all round!

Here are the local bike shops offering discounts:

- [Bike Factory](#) on Boughton – offering a 10% discount on bikes, parts and accessories (excluding labour, special offers and sale items)
- [Chester Cycle Hub](#) – offering 10% off the labour element of their “Ready To Ride Service”
- [Leisure Lakes Bikes](#) Frodsham – offering 10% discount on parts, accessories, and clothing.

There are even more member benefits:

- Cycle Training Lessons Discount
- Free Cycle Health Check at Bren Bikes
- Free Cycle Safety Check
- Free Loan of Our Cycle Workstand and Set of Cycle Tools

See full details on our [website](#).



More Snickets of Chester

Campaign member Andy Ashton is continuing his series of posts on the Campaign's [Facebook](#) and [Instagram](#) accounts, showing handy snickets for cyclists getting around Chester.

A snicket is a cut through you can take on a bike which joins two places which are far apart by car. There are quite a few in Chester, but not many people know about them!

Andy has recently covered several snickets, including this handy way to get across Vicar's Cross:

Bridge Terrace (Shed Lane) in Vicar's Cross, at the traffic lights for Home Bargain and Aldi, through to Kirkland Close and Pentland Close, which lead on to Hoole Bridge. See the video on our [Facebook page](#).



Look on our [Facebook](#) and [Instagram](#) pages for more snickets of Chester!



Get a Cycle Buddy!

Spring is here, a good time to get on your bike! Are you one of the many people who say they would like to cycle in and around Chester but are unsure about riding on your own, riding in traffic, which route to take, where to park your bike, etc. etc? Or maybe you'd like to get back on a bike after some time and need a bit of a confidence boost?

If so, Chester Cycle Buddies can help.

We match up an experienced volunteer cyclist with people who would like some support, and tailor the support to their needs.

It's free, and you don't have to be a member of Chester Cycling Campaign to use Cycle Buddies!

Joyce (pictured right) recently used Cycle Buddies to find out how to get into Chester city centre from her home in the outskirts, and where to park her bike once in the city centre. People are often surprised to learn how easy it can be to get around Chester by cycle (work, children's schools, shops, city centre, leisure, friends, etc).

Check out the [Chester Cycle Buddies Scheme](#) page on our website.



Joyce (left) and Cathey (right), her cycle buddy from the Campaign.



Join the Campaign electronically, via our [website](#).
Or, if you prefer, use the form below.

Join the Chester Cycling Campaign!

Name	
Address	
Post Code	
Phone	
Email	

If you are happy to receive your Campaign bulletins by e-mail and to be notified of Campaign activities by email, please tick here: ☐

- | | | |
|--------------------------|-----------------------|----------------|
| <input type="checkbox"/> | Individual Membership | £10.00 |
| <input type="checkbox"/> | Unwaged\Student | £5.00 |
| <input type="checkbox"/> | Family Membership | £15.00 |
| <input type="checkbox"/> | Corporate Membership | £25.00 |
| <input type="checkbox"/> | Life Membership | £100.00 |

Membership is valid until end of September during year of joining. Join after April 1st and it will be valid until the end of September in the following year!

How did you hear about the Chester Cycling Campaign?

- | | |
|---|---|
| <input type="checkbox"/> Chester Cycling Campaign website | <input type="checkbox"/> Local Event |
| <input type="checkbox"/> Friend | <input type="checkbox"/> Local Press |
| <input type="checkbox"/> Cycling Matters Newsletter | <input type="checkbox"/> Social Network |
| <input type="checkbox"/> Other – state: | |

I enclose an additional donation of £ _____

I agree to this information being placed on an electronic database for Campaign purposes only.

Signed _____ Date _____

Please send completed form & cheque (payable to Chester Cycling Campaign) to:

Chester Cycling Campaign Membership Secretary
1 King's Crescent West
Chester
CH3 5TQ